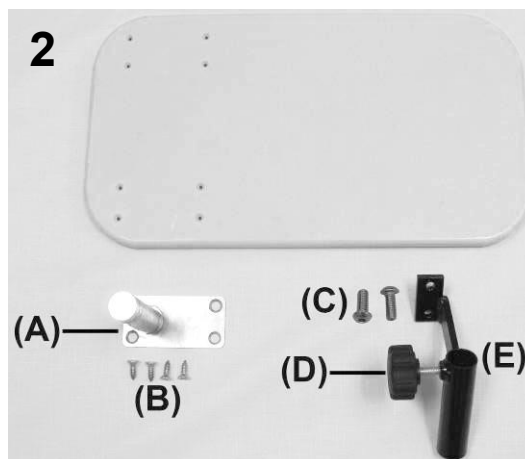
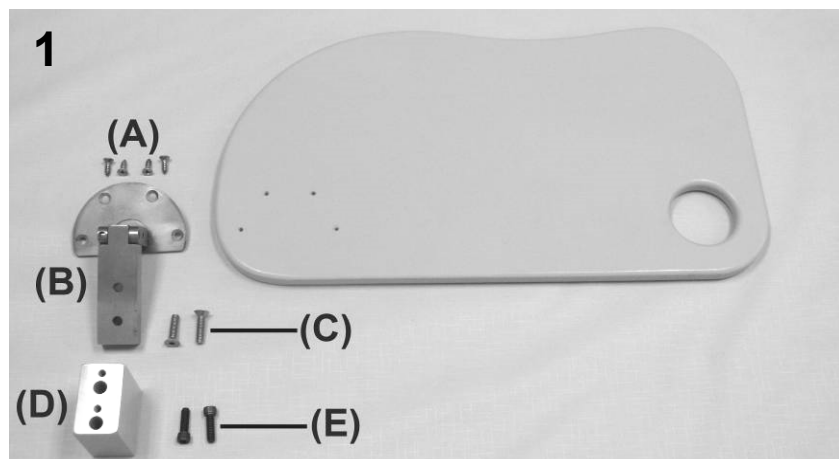


Versa & Pivot Table OPTIONS

For Chair Models: 540-557-558-567-568-590-670-671-674-675-690-691-694-695-698-699



PARTS LIST

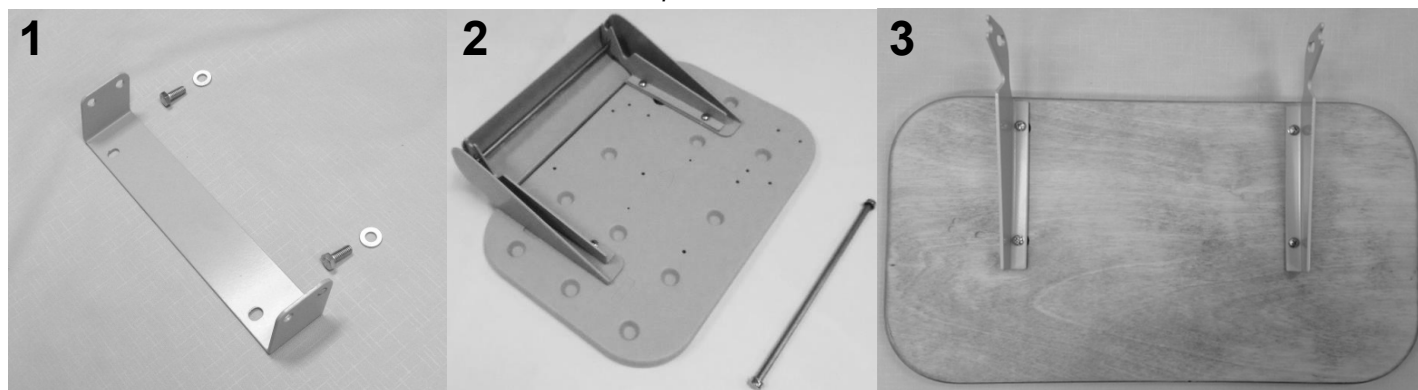
Image Number	Note	Part Number	Description	QTY per Product
1	A		<u>VERSA-TABLE</u>	
1		261680	VERSA TABLE, TOP	1
1A		566576	SCREW 14 X 3/4 " A PAN PHILLIPS TAP SCREW	4
1B	B	402200	UP-OVER-AWAY MECHANISM	1
1C		566575	SCREW 5/16-18 X 1 1/4 " FLAT HEAD SCREW, SS	2
1D		402210	SPACER BLOCK, VERSA TABLE	1
1E	C	506100	5/16-18 X 3/4" SOCKET HEAD CAP SCREW	2
2	D,E		<u>PIVOT TABLE</u>	
2		261660	FRONT PIVOT TABLE - TOP	1
2A		402150	WELDED POST & PLATE SS, FRONT PIVOT TABLE	1
2B		566576	SCREW 14 X 3/4 " A PAN PHILLIPS TAP SCREW	4
2C	C	566580	5/16-18 x 3/4" Button Socket Cap Screw, SS	2
2D		207007	KNOB FOR PIVOT TABLE	1
2E		207000RB	WELDED MOUNTING BRKT, RIGHT SIDE PIVOT TABLE-BLACK	1
2E		207000LB	WELDED MOUNTING BRKT, LEFT SIDE PIVOT TABLE-BLACK	1
N/A		680015	LOCTITE, THREADLOCKER, .02 OZ TUBE #262	1

NOTES

Note	Description
A	Parts are available as replacement ONLY. Can NOT be added to any chair model.
B	This is factory modified for left or right side
C	LOCTITE (Part # 680015) is recommended when ordering this screw.
D	Can't be added in the field to models: 590-690-691-694-695 & Left Arm on 698-699 models.
E	Can be added in the field to models: 540-557-558-567-568-670-671-674-675
	<i>Left & Right is determined - as if sitting in the chair</i>

STANDARD Side-Table OPTION

Not STANDARD but available as an option for Chair Models: 540-557-558-567-568



PARTS LIST

Image Number	Note	Part Number	Description	QTY per Product
1 & 2	A,C	261640K	SIDETABLE/COVER REPLACEMENT KIT BOLT-ON BRKT STYLE	1
1	B	202685	SIDE TABLE MOUNTING BRKT - GRAY - GRAY - GRAY	1
1	B	566416	BOLT - 5/16 X 3/4 HEX CAP SCREW, GR.5, ZINC, W/BLUE NYLON P	2
1	B	566304	WASHER-5/16 SAE FLAT WASHER ZINC	2
2	B	700440	SIDE TABLE, BLOW MOLDED	1
2	B	700426	COVER, INJECTION MOLDED (FOR SIDE TABLE)	1
2	B	203155	SIDE TABLE HINGE BRKT (PR), GRAY	1
2	B	566561	#12 X 3/4" PANHEAD PHILLIPS TAP SCREW, ZINC	4
2	C	243270	5/16 SS ROD FOR SIDE TABLE EA.	2
N/A	C	500750	5/16" PUSHNUT FASTENER NICKEL	2
2	C	243273	THREADED ROD FOR SIDE TABLE KIT	2
2	C	566205	NUT-5/16-18 HEX NYLON LOCK NUT ZINC	4
3		260260	SIDE TABLE, PLYWOOD, DARK FINISH; GINGER ON MAPLE	1
3		260250	SIDE TABLE, PLYWOOD, LIGHT FINISH; GOLDEN PECAN	1
3		203155	SIDE TABLE HINGE BRKT (PR), GRAY	1
3		566300	WASHER-10 INTERNAL TOOTH WASHER ZINC	4
3		566509	SCREW-MACH 10-24 X 3/8 PAN PHIL M/S ZINC	4

NOTES

Note	Description
A	VERSION 2 side table is 1 ¼ inches thick.
B	It is NOT recommended that these parts be sold seperately however in special cases they can be.
C	When ONLY replacing the rods DO NOT order the ones listed in kit. MUST order threaded rods and nut
NOTE:	Chairs produced after 2-29-16 will have universal side table top part# 700440.

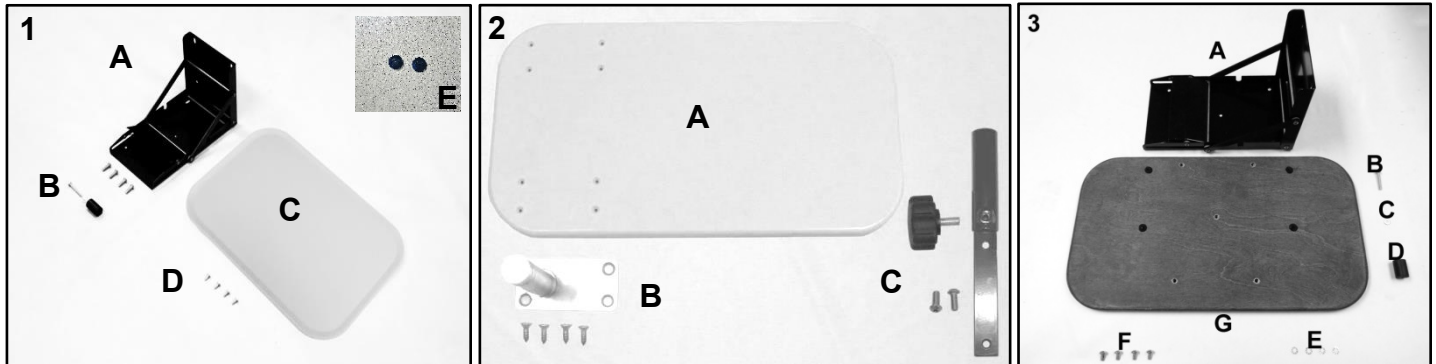
5001, 6240, and Vero Side-Table OPTIONS

PARTS LIST

Image Number	Note	Part Number	Description	QTY per Product
VERSION 1				
1		261624K	SIDE TABLE INSTALLATION KIT (FOR PREMIUM CHAIRS)	1
1A		402626	SIDE TABLE BRKT COMPLETE (624)	1
1A		566504	SCREW-MACH 1/4-20 X 3/4 RND PHILLIP M/S ZINC	4
1B		700135	STOP BUMPER, PLASTIC	1
1B		566553	TAP SCREW #10 X 1-1/4" PAN PHIL T/S ZINC	1
1B		566321	WASHER-SBUP 3/16 STEEL BACK WASHER	1
1C		700440	SIDE TABLE, BLOW MOLDED	1
1D		566613	#12 -14 X 1/2" PAN PHIL TYPE B SHT MLT SCREW, ZINC	4
1E	B	700705	PLUG, 1/2" FLUSH HEAD, BLACK PLASTIC	2
2		206295RK	Pivot Table Replacement Kit - RIGHT	1
2		206295LK	Pivot Table Replacement Kit - LEFT	1
2A	A	261660	FRONT PIVOT TABLE - TOP	1
2B	A	402150	WELDED POST & PLATE SS, PIVOT TABLE	1
2B		566576	SCREW 14 X 3/4 " A PAN PHILLIPS TAP SCREW	4
2C		206295B	WELDED PIVOT BRACKET, BLACK (624 style)	1
2C		207007	KNOB FOR PIVOT TABLE	1
2C		566592	1/4-20 X .88 SOCKET BUTTON HEAD CAP SCREW, ZINC	2
3A		402626	SIDE TABLE BRKT COMPLETE (624)	1
3B		566513	SCREW-MACH 10-24 X 1 1/4 PAN PHILLIP M/S ZINC	1
3 C,E		566321	WASHER-SBUP 3/16 STEEL BACK WASHER	5
3D		700135	STOP BUMPER, PLASTIC	1
3G		260260	SIDE TABLE, PLYWOOD, DARK FINISH; GINGER ON MAPLE	1
3G		260250	SIDE TABLE, PLYWOOD, LIGHT FINISH; GOLDEN PECAN	1
3F		566510	SCREW-MACH 10-24 X 1/2 PAN PHIL MACHINE SCREW	4

NOTES

Note	Description
A	2A & 2B are pre-assembled prior to shipment. This is what makes the kit a LEFT or RIGHT <u>Left & Right is determined - as if sitting in the chair</u>
B	This part is ONLY installed with the Urethane Arm Option.
NOTE:	Chairs produced after 2-29-16 will have universal side table top part# 700440.



Title: Side-Table Options

Page 4 of 4

PL- Side-Table Options

Effective Date: 01/25/18

Rev. 01

Revision History

REV	Effective Date	CCR Number	Description of Change
01	01/25/18	ECN 18-005	Addition of PN 700705- "Black Plugs w/ Urethane Arm Option Only".