

8550 Recovery Couch



CUSTOMER INSTRUCTIONS

PLEASE READ AND FAMILIARIZE YOURSELF WITH ALL INSTRUCTIONS BEFORE USING THIS PRODUCT. If you have trouble understanding these instructions contact your dealer or Winco customer support, (800) 237-3377 before attempting to use this product; otherwise injury may occur.

Winco assumes no responsibility for damage or injury caused by improper assembly, installation, use, or maintenance of these products.



1. **READ AND FOLLOW ALL DIRECTIONS.**
2. NEVER stand on table or INJURY MAY OCCUR.
3. NEVER allow user to sleep unattended on table or INJURY MAY OCCUR.
4. NEVER leave an unconscious user unattended on table or INJURY MAY OCCUR.
5. DO NOT use table for transporting user in or with ANY type of vehicle or trailer. Winco tables have not been tested or approved for use by an occupant in any type of vehicle or trailer.
6. NEVER leave an infant or child unattended on table or INJURY MAY OCCUR.
7. Periodically, recheck tightness of all nuts, bolts and screws.
8. USE ONLY WINCO AUTHORIZED REPLACEMENT PARTS.
9. NEVER EXCEED the recommended **weight capacity of 400 lbs.** (181.4 kg).
10. SAVE THESE INSTRUCTIONS for future reference and training.

8550 Weight Capacity = 400 lbs. (181.4 kg.)

Tools needed:

- Phillips-head screwdriver
- 7/16" wrench (multiple size wrench included)
- Scissors or box cutter
- Cardboard shipping container (stays under table during assembly to protect upholstery)
- - If using powered tools, always start hardware together by hand first & wear safety goggles

PLEASE READ AND FAMILIARIZE YOURSELF WITH ALL INSTRUCTIONS BEFORE PROCEEDING WITH ASSEMBLY

SEE "Parts Guide & List" (pg.3) for visual reference during assembly.

1. After checking your product for any shipping damage, table needs to be positioned upside-down on cardboard or protective surface. Remove all packing material and hardware that was secured for shipping. Cut tape on corners of box so that cardboard will lay flat while you assemble table.

2. You will find two **Table Legs**, in-between and attached to the **Table Frame Rails**. Pivot up the (2) **Table Legs**.

NOTE: The table legs have braces that need to align with two threaded holes in the wood of the **Upholstered Top**.

3. Install (4) ¼-20 x 1-½" screws through (2) holes in each **Upper Leg Brace** of the **Table Legs**, and into (2) threaded holes (each end) in the wood of the **Upholstered Top**.

NOTE: Do not fully tighten at this time.

4. Place (4) ¼-20 x 1-½" carriage bolts into the (4) holes through the **Lower Leg Brace** of the **Table Legs**. Heads of screws should face the ends of table, for better appearance.
5. Align the **Cross-brace** (smoothest side up) with the (4) screws that you just installed on step 4, and fasten with (4) ¼-20 nuts.

If the **Optional Shelf** and **Reinforced Cross-brace** have been ordered; make sure that the smooth surface (side with tape) of the **Cross-brace** will face upward (when the table is in the upright position) prior to fastening to **Table Legs**.

6. TIGHTEN ALL nuts and bolts at this time.
7. Install the four (4) **Threaded Inserts** with **Glide Feet** into the ends of the table legs.
8. Using at least two people, turn table upright.
9. Remove (1) of the white plastic caps on the **Paper Rod** and install into the (2) **Paper Rod Clamps**, replace cap. Adjust (4) 5/16" **Glide Feet** to level table.

Optional Shelf installation:

10. Double-sided tape has been installed on the **Reinforced Cross-brace**.
11. Before removing paper on tape, "test fit" the shelf. Shelf should be approximately ¼" from edge of the **Lower Leg Brace** of the **Table Legs**.
12. Once you are certain of where you will position the shelf, peel off the paper to expose adhesive.

*After peeling paper from adhesive tape:
Use damp sponge to moisten tape to allow shelf to be adjusted during install.
Once tape is dry shelf will stay in place.*

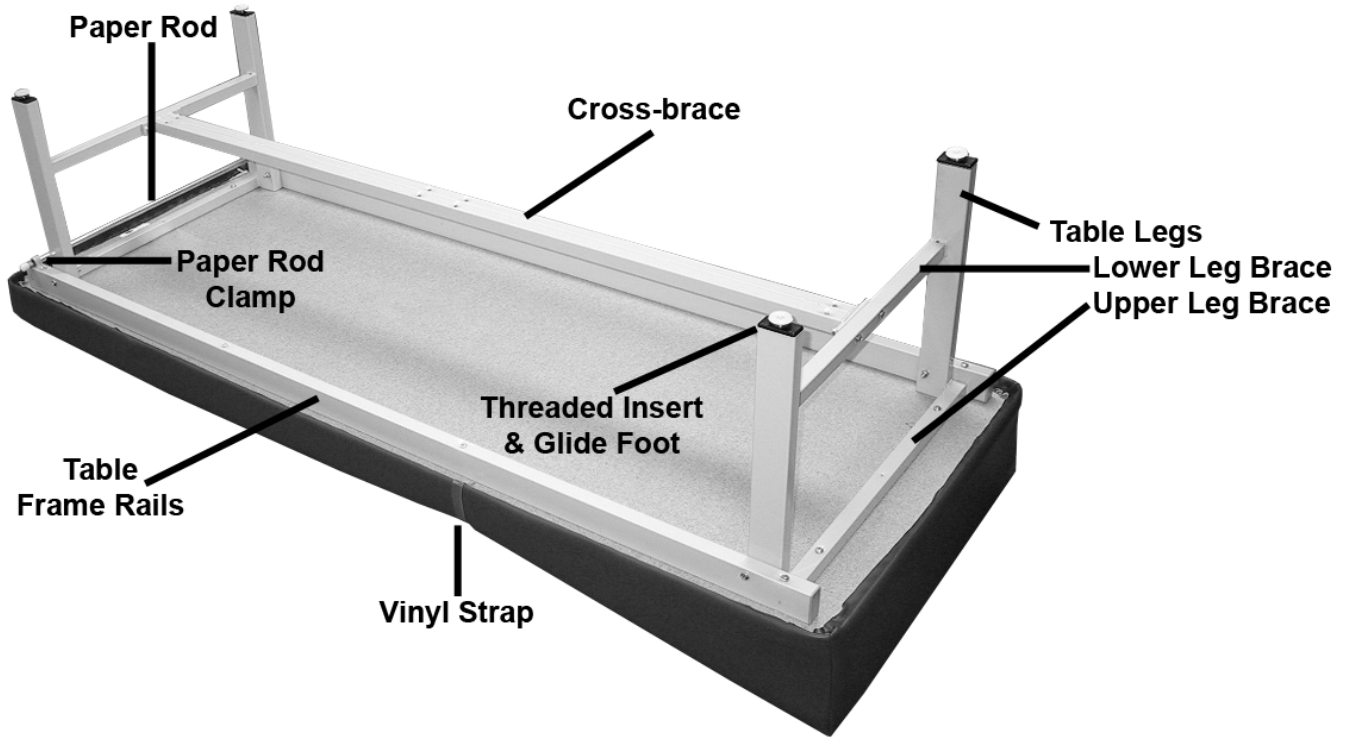
13. Carefully position shelf in place on adhesive.

Vinyl Strap Adjustment – Should the vinyl strap on your Winco table need to be adjusted, unscrew the screw that currently holds either side of it in place. Pierce another hole in the strap to give desired tension and re-insert screw.

Wrinkles in Vinyl – Storage and shipping can cause wrinkles of the vinyl on your Winco table. This is normal. Please allow 1-2 weeks at room temperature (approx. 70 degrees) to allow for vinyl to expand back to original appearance.

Do not over tighten nuts and bolts. Periodically check all fasteners for tightness.

Parts Guide & List



Items factory installed on table:

Table Frame	2
1/4-20 x 2 1/2 screw	4
1/4-20 lock nut	4
Paper Holder Rod	1
Paper Rod Strap (bracket)	2
Upholstered Top	1
1" x 2" rectangular insert caps, (gray)	4
Vinyl Strap	1

Qty.

Sizing chart – part number

222700
566519
566204
222705
501810
CALL FOR P/N
701010
271500

Items included with table (NOT factory installed):

Welded Leg Assembly (19 inch)	2
Adjustable Glide Foot (threaded)	4
Threaded Leg Insert (for Glide Foot)	4
Welded Brace Assembly (no shelf)	1
Welded Brace Assembly (with shelf)	1
Shelf, plain	1

1/4 - 20 x 1 1/2 carriage bolt
leg assy. to cross brace

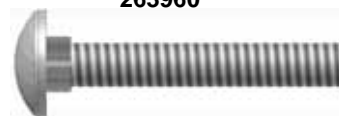
4

1/4-20 X 1 1/2" screw
leg assy. to table bottom

4

1/4-20 lock nut
welded brace assy. to both leg assemblies

4



566401



566506



566204



LIMITED WARRANTY

• 5516 SW 1st Lane • Ocala, FL 34474
 • Phone (352) 854-2929 • (800) 237-3377
 • Fax (352) 854-9544
 • www.wincomfg.com
 • customerservice@wincomfg.com

TERMS

Winco Mfg., LLC. warrants this product to be free of manufacturer's defects in material and workmanship, provided that the product is used according to normal operating conditions and proper maintenance intended by manufacturer. This warranty is available only to the original retail purchaser, is non-transferable and commences on the date of retail sale; proof of purchase required.

Limited One Year Complete Product Warranty: Winco Mfg., LLC warrants the complete product for one (1) year. At Winco Mfg., LLC. sole discretion, it may repair or replace any components freight free that are found to be defective during the first year. *Winco Mfg., LLC. shall not be liable for any labor, or any other costs incurred as a result of or in conjunction with a warranty claim.*

Limited Three Year Warranty: Winco Mfg., LLC warrants the recliner mechanisms, electrical components, vinyl [from cracking or delaminating] pressurized gas springs, when new, for a period of three (3) years. At Winco Mfg., LLC. sole discretion, it may repair or replace components found to be defective. *Winco Mfg., LLC. shall not be liable for any labor, shipping or any other costs incurred as a result of or in conjunction with a warranty claim.*

Limited Lifetime Chair Frame Warranty: Winco Mfg., LLC warrants the steel chair frame, when new, for the lifetime of the original purchaser. This limited warranty does not apply to paint/finish or any components attached to the frame such as; upholstery, foam, casters, mechanisms or related parts that are covered under above warranties. *Winco Mfg., LLC shall not be liable for any labor, shipping or any other costs incurred as a result of or in conjunction with a warranty claim.*

The purchaser's exclusive remedy under this warranty shall be limited to such repair or replacement of defective components at Winco Mfg., LLC sole discretion. For warranty service, contact the dealer that the product was originally purchased from or Winco Mfg., LLC directly.

EXCLUSIONS

There are no other warranties, conditions, representations or guarantees, express or implied, made or intended by Winco Mfg., LLC and all other warranties, conditions, representations or guarantees including any warranties, conditions, representations or guarantees under any Sale of Good Act or Like legislation or statute is hereby expressly excluded. Any and all other implied warranties shall not extend beyond the duration of the express warranty. Liability for incidental or consequential damages is excluded to the extent permitted by law. Some states do not allow the exclusion or limitation so the above limitation or exclusion may not apply to you. This warranty gives you specific legal rights. In addition you may also have other rights, which vary from state to state.

GENERAL PROVISIONS

No warranty herein contained or set out shall apply when damage or repair is caused by any of the following:

1. Damage in transit.
2. Accident, alteration, abuse or misuse of product ie. exceeding weight capacities, applying inordinate pressure to footrest/leg rest, use in Mental Health facilities or like institutions.
3. Fire, water damage, theft, war, riot, hostility, acts of God.

Examples contained in this list are not to be construed as all-inclusive.

