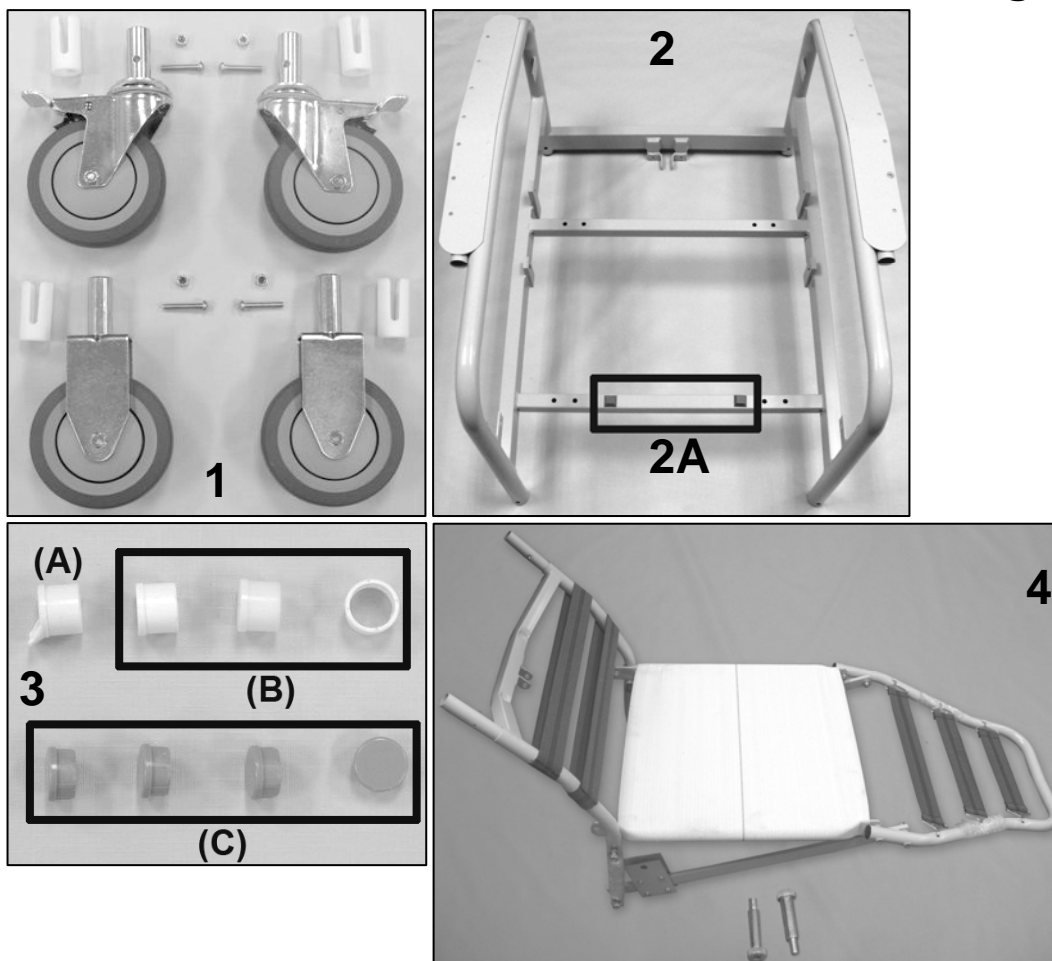


## 5351/5361 Caremor Recliner Parts Catalog



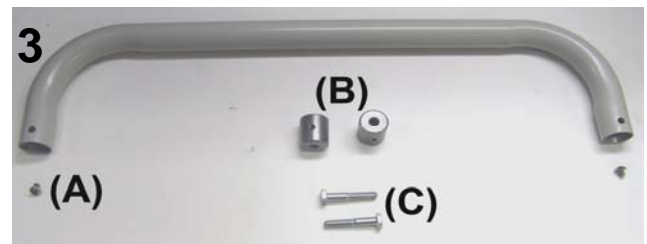
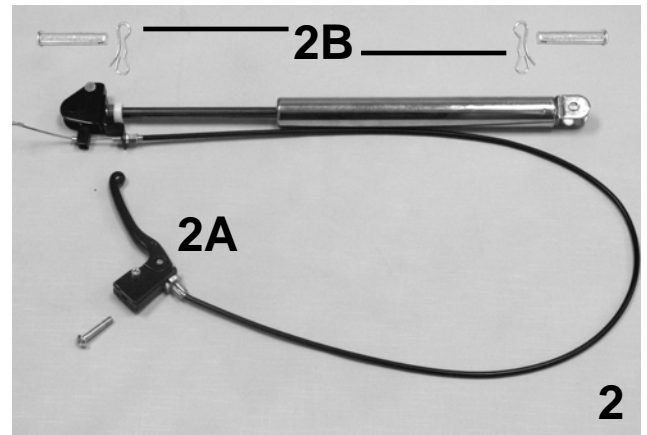
## PARTS LIST

Image Number	Note	Part Number	Description	QTY per Product
1		404500	CASTER 5"TOTAL LOCK GREY TIRE W/PLASTIC THRD GD	2
1		404610	CASTER, ZINC RIGID 6.25" FORK W/5" GRAY WHEEL 7/8" STEM	2
1		702250	CASTER SLEEVE INSERT	4
1		566506	SCREW-MACH 1/4-20 X 1 1/2 RND PHIL M/S ZINC	4
1		566204	NUT-1/4-20 HEX NYLON LOCKNUT ZINC	4
2		253500	535 WELDED MAIN FRAME	1
2A	A	701900	GREY BUMPON W/ADH BACK	2
3A	A	701040	TRAY RECEIVING TUBE FLANGED INSERT	1
3B	A	701045	TRAY RECEIVING TUBE PLAIN INSERT	3
3C	B	700701	1" RD X 18 GA GRAY CAP	4
4	C,D	453500	535A SEAT/LEGREST ASSEMBLY	1

## NOTES

Note	Description
A	These parts MUST be ordered when ordering the welded main frame
B	For <b>5361</b> chair models ONLY
C	This is a fully assembled product. No individual parts are available.
D	For 535 models WITH an "A" in the serial # ONLY (EXAMPLE: 535 <b>A</b> 100645)
	<i>Left &amp; Right is determined - as if sitting in the chair</i>

## 5351/5361 Caremor Recliner Parts Catalog



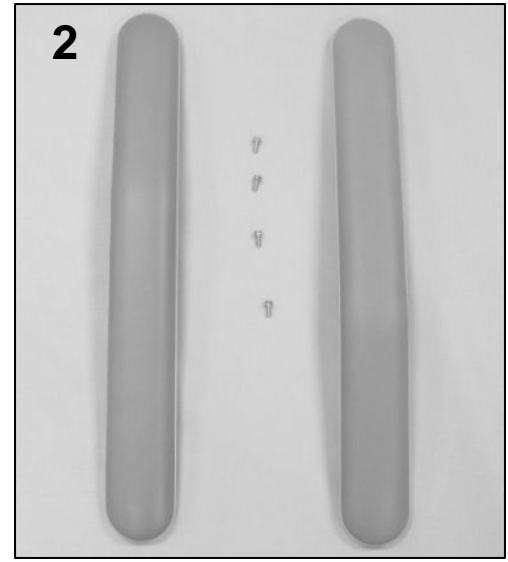
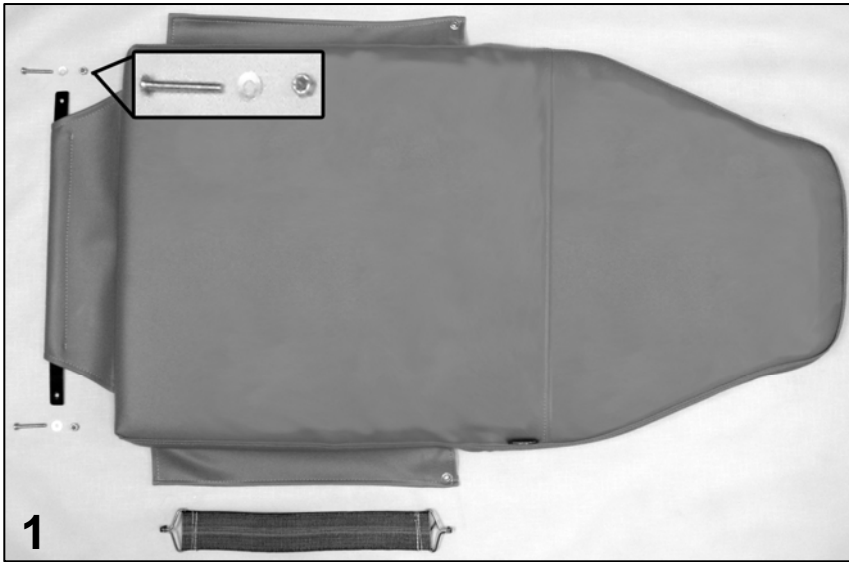
## PARTS LIST

Image Number	Note	Part Number	Description	QTY per Product
1	A	U0204XX	535 UPHOLSTERED BACK	1
1		253540	WELDED KD TOP BACK FRAME 535	1
1	C	902510	SEWN WEB-BAND 29" 532	4
2		205235	535 GAS CYL. W/OPR.& CABLE ASSM'D & ADJ'D	1
2A	D	705350	RELEASE LEVER 535	1
2B		200025	CLEVIS/COTTER PIN ASSM. KIT	2
3		<b>253560K</b>	<b>535/536 PUSH HANDLE KIT COMPLETE</b>	1
3	B	253560	PUSH HANDLE (535 STYLE)	1
3A	B	566584	SCREW, 1/4-20 x 1/4" SS BUTTON SOCKET HEAD SCREW	2
3B	B	402775	MOUNTING DOWEL, PUSH HANDLE	2
3C	B	566583	SCREW, HEX CAP 1/4-20 X 1 1/2" GRADE 5, ZINC	2
N/A	B	680015	LOCTITE, THREADLOCKER, .02 OZ TUBE #262	1

## NOTES

Note	Description
A	XX- Use color code for specific part number i.e. 02 - Royal Blue
B	It is NOT recommended that these parts be sold separately however in special cases they can be.
C	This part is included when ordering 253540
D	This part is included when ordering 205235 - DOES NOT include cable when ordering separately.
OPTIONS	For TB133 Add TB after Part Number i.e. U020402TB
	Use <b>00</b> in place of options code if unavailable i.e. U0204XX <b>00</b> For Upholstered Back w/ NO TB
	<i>Left &amp; Right is determined - as if sitting in the chair</i>

# 5351/5361 Caremor Recliner Parts Catalog



## PARTS LIST

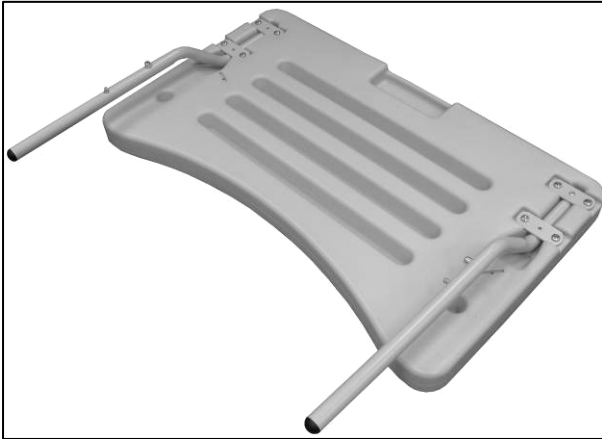
Image Number	Note	Part Number	Description	QTY per Product
1	A,B	U0322XX	535A UPHOLSTERED SEAT/LEGREST	1
1		229945	535 APRON SLAT	1
1		272905	SEWN WEB BAND W/HOOKS 13.5"	1
1		566514	SCREW-MACH 10-24 1 1/2 PAN PHILLIP M/S ZINC	2
1		566203	NUT-10-24 HEX NYLON LOCK NUT ZINC	2
1		566302	WASHER-#10 SAE F/W ZINC	2
2	A,C	U0107XX	1 PAIR OF ARMS	1
2		566589	SCREW-MACH 10-24 X 5/8" HEX WASHER SLOT M/S ZINC	4
3	A,C	U0603XX	535 LEFT SIDE PANEL	1
3	A,C	U0703XX	535 RIGHT SIDE PANEL	1
3		566510	SCREW-MACH 10-24 X 1/2 PAN PHIL MACHINE SCREW	4

## NOTES

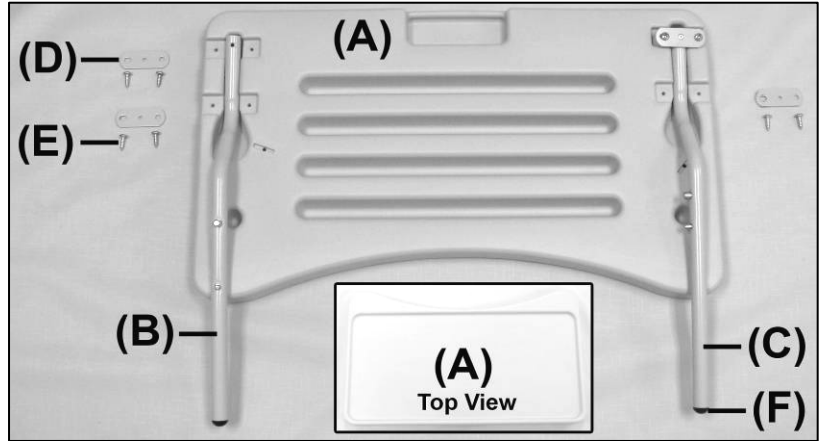
Note	Description
A	XX- Use color code for specific part number i.e. 02 - Royal Blue
B	For 535 models WITH an "A" in the serial # ONLY (EXAMPLE: 535A100645)
C	Screws needed to attach this product are included
OPTIONS	For TB133 Add TB after Part Number i.e. U020402TB
	Use <b>00</b> in place of options code if unavailable i.e. U0204XX <b>00</b> For Upholstered Back w/ NO TB
	<i>Left &amp; Right is determined - as if sitting in the chair</i>

# 5351/5361 Caremor Recliner Parts Catalog

## 5351 Tray



1



2

### PARTS LIST

Image Number	Note	Part Number	Description	QTY per Product
1		270000	TRAY ASSEMBLY	1
2A		700410	TRAY BLOW MOLDED LT. GRAY	1
2B		<b>270020</b>	<b>RIGHT TRAY ARM ASSEMBLY</b>	1
	A	241600	TRAY ARM RIGHT	1
	A	401920	DUAL SNAP BUTTON (FOR TRAY ADJUSTMENT)	1
2F	A	700820	PLASTIC BALL GLIDE 3/4" BLACK	1
2C		<b>270010</b>	<b>LEFT TRAY ARM ASSEMBLY</b>	1
	A	241610	TRAY ARM LEFT	1
	A	241650C	TRAY ARM STRAP, COATED	1
	A	401925	SOLID DUAL SNAP BUTTON (FOR TRAY STORAGE)	1
	A	566100	RIVET-AD 54 BS POP RIVET	1
2F	A	700820	PLASTIC BALL GLIDE 3/4" BLACK	1
2E		566561	#12 X 3/4" PANHEAD PHILLIPS TAP SCREW, ZINC	8
2D		241650C	POWDER COATED TRAY ARM STRAP	3

### NOTES

Note	Description
A	It is NOT recommended that these parts be sold separately however in special cases they can be.
	<i>Left &amp; Right is determined - as if sitting in the chair</i>

For additional options please see: **IV POLE OPTIONS PAGE**